



Al Arabia For Trade and Industrial Development

INDUSTRIES PARK
QANTARAH WEST

INDUSTRIAL PARK . INFINITE POSSIBILITIES



Sustainable Industries Park 139 FD

Sustainable Industries Park

A green, smart, and capacity-building industrial zone.

Industrial Park , green , smart , and a capacity builder



capacity builder



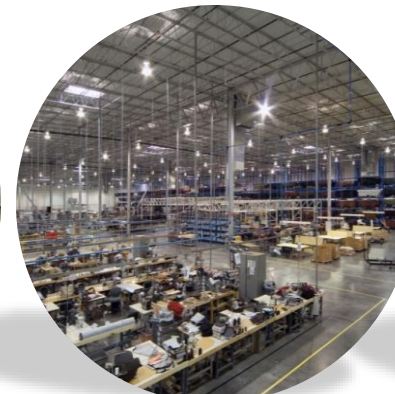
Smart



Green



Industrial



Design guidelines for the industrial area

Sustainability and Smart City Standards

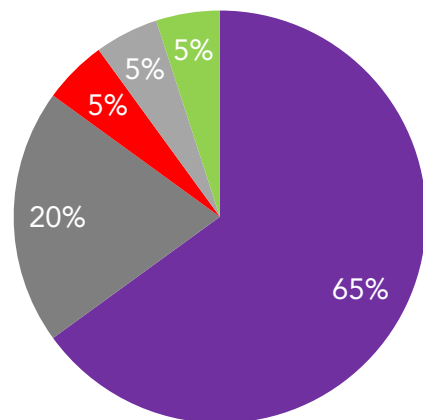
Land Use Percentages

Industry Support Activities

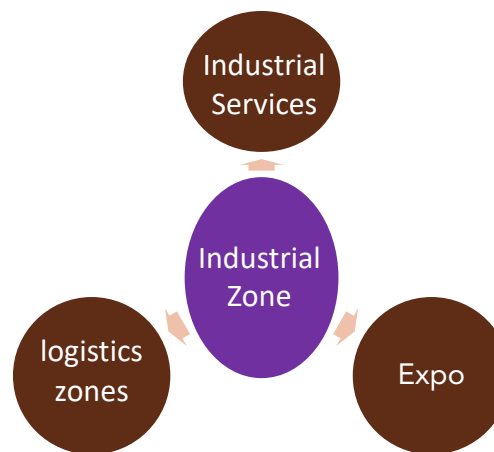
Site significance



Integrating sustainability elements into the master plan of the area and localizing smart city principles



- Industrial
- Services
- Green Area
- Roads
- Parking



Localization of industry-supporting activities such as industrial services, exhibition grounds, and logistics zones."



Project Location:
Ismailia – Port Said Road

Design guidelines for the industrial area

Industrial City Services

Workshops and Maintenance Centers

Utility Services

Storage and Marketing Services

Industrial City Management

Transportation and Distribution Services

Healthcare Services

Commercial Services

Religious Services

Recreational and Transportation Services

Banking Services

Building and Land Maintenance

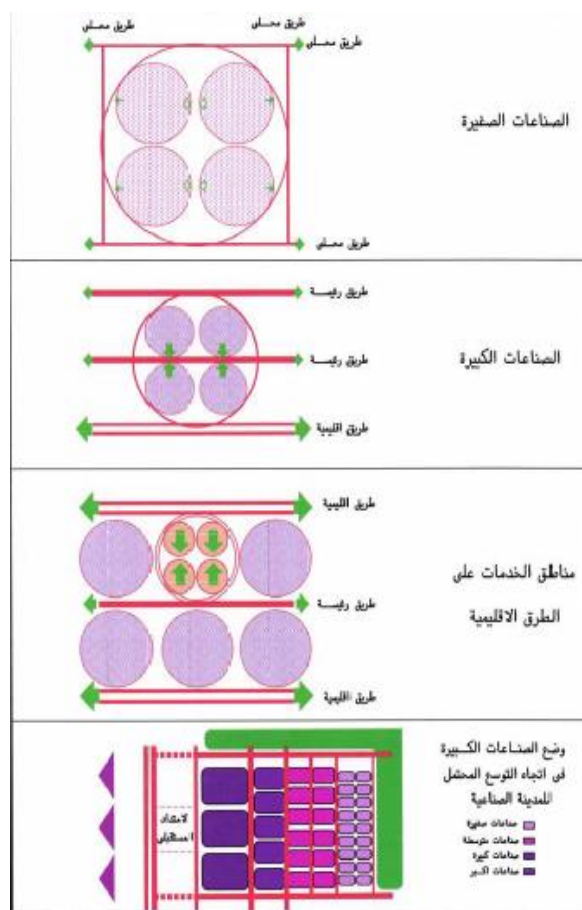
Multipurpose Hall

Industrial Services

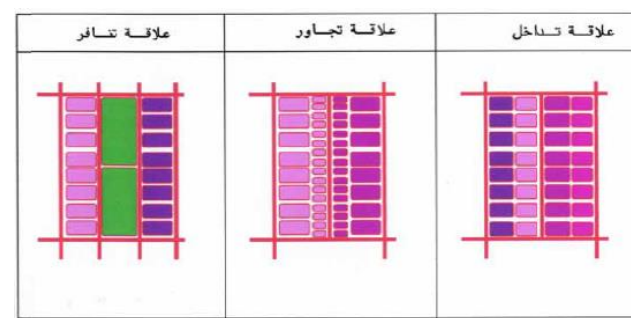
Social Services

General and Diverse Services

Industrial Activity Distribution Criteria



Factory-to-Factory Relationships



Do not cluster incompatible industrial activities

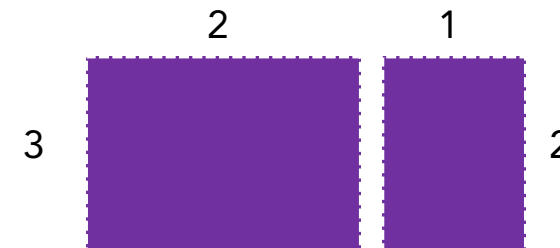
Clustering Activities – Compatible Factories

Clustering Activities – Homogeneous Factories

Land Plot Areas

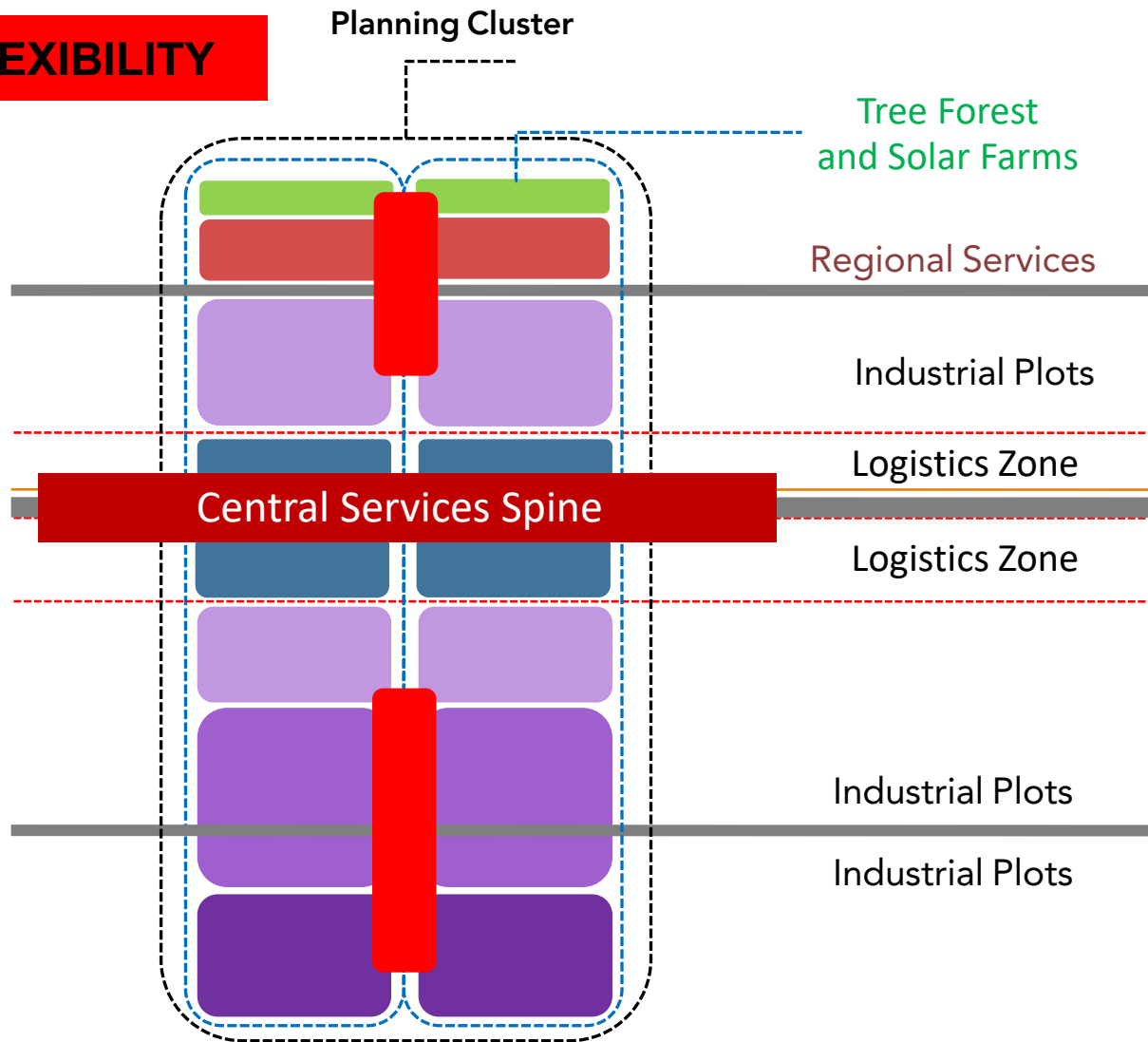
Types of Land Plots in the Industrial Area
 Large Land Plots: Area of 20,000 m²
 Medium Land Plots: Area from 10,000 m²

Preferred Ratios for Land Plot Dimensions

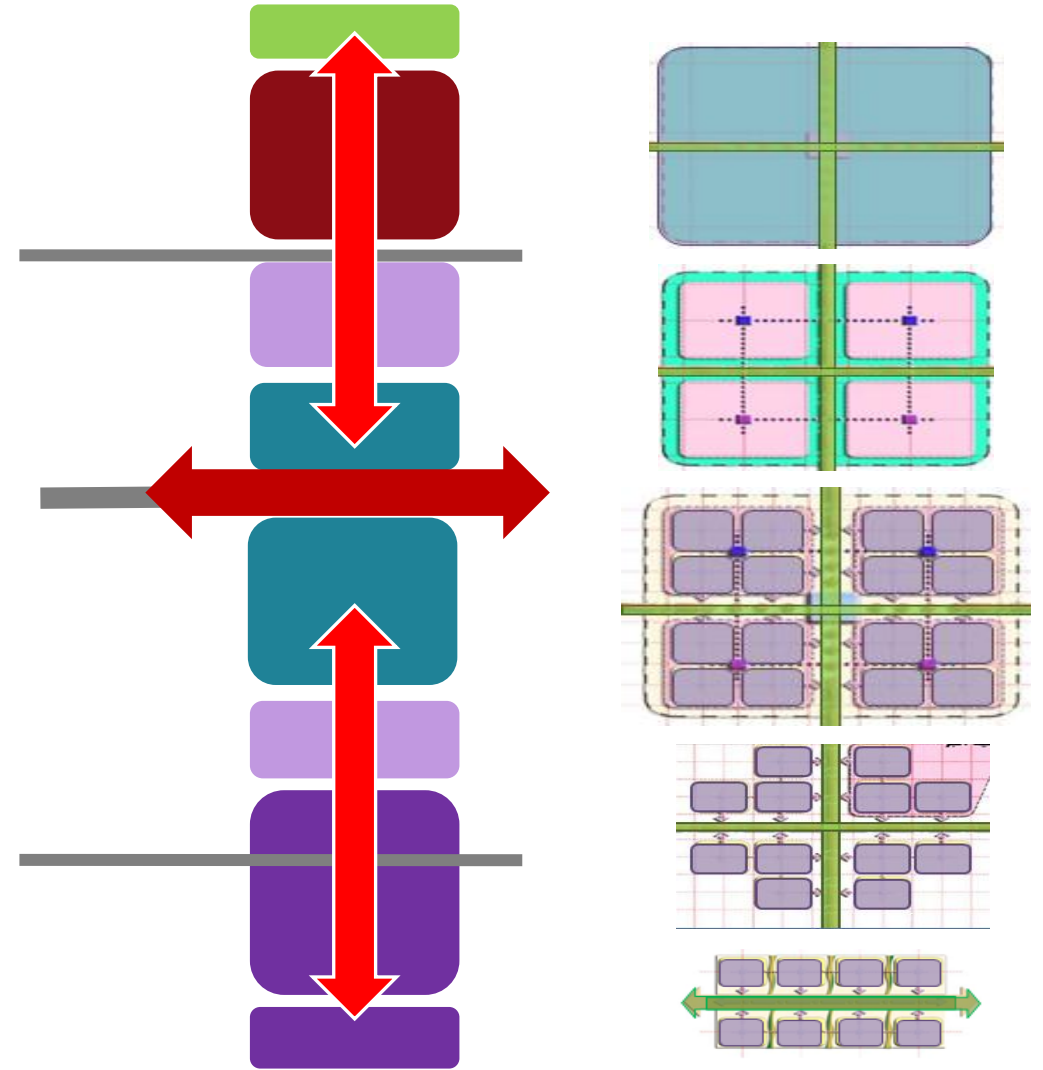


Design guidelines for the industrial area

FLEXIBILITY



Planning Sub-Cluster

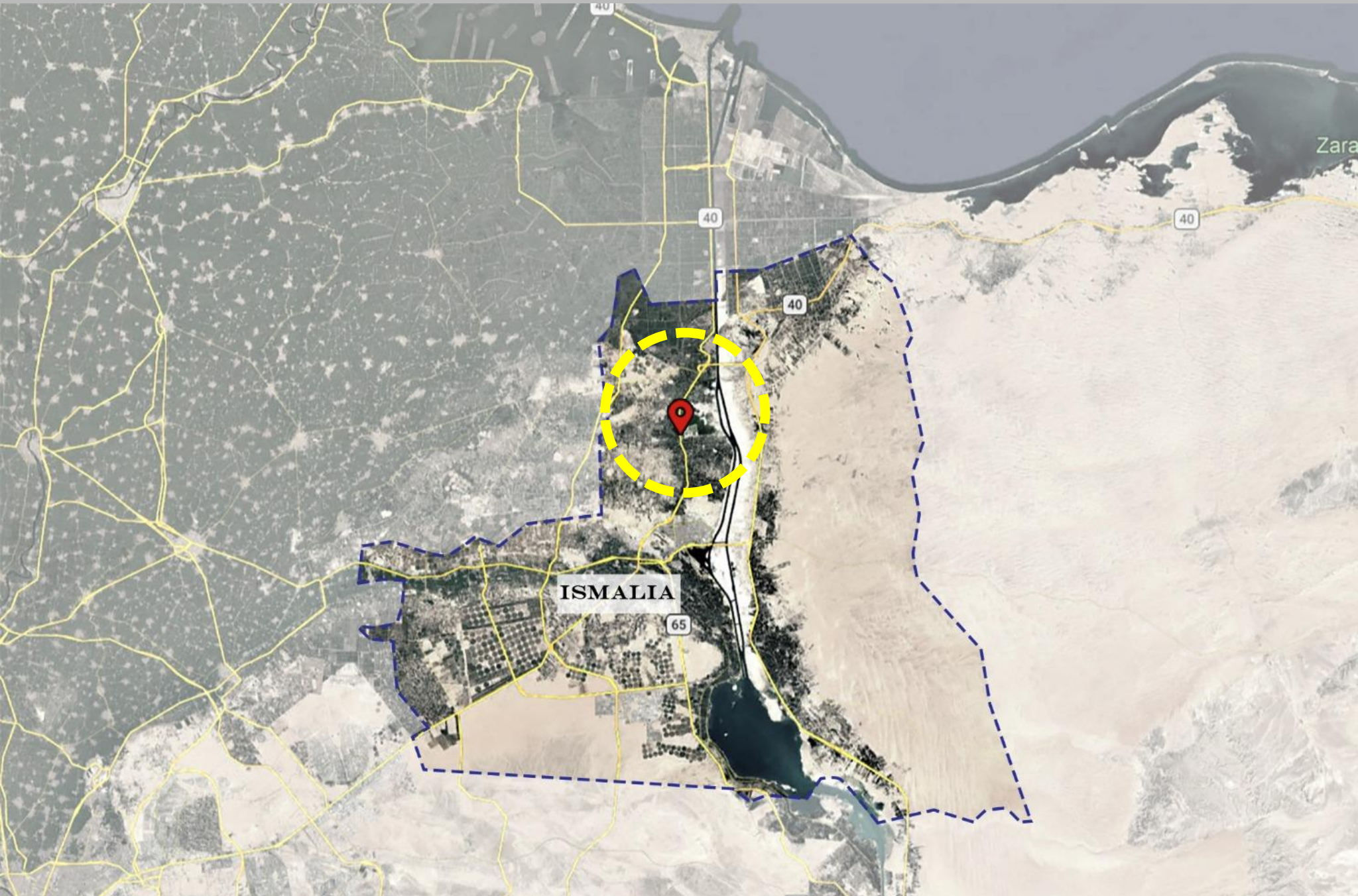


Self Contained Cluster Planning Unit

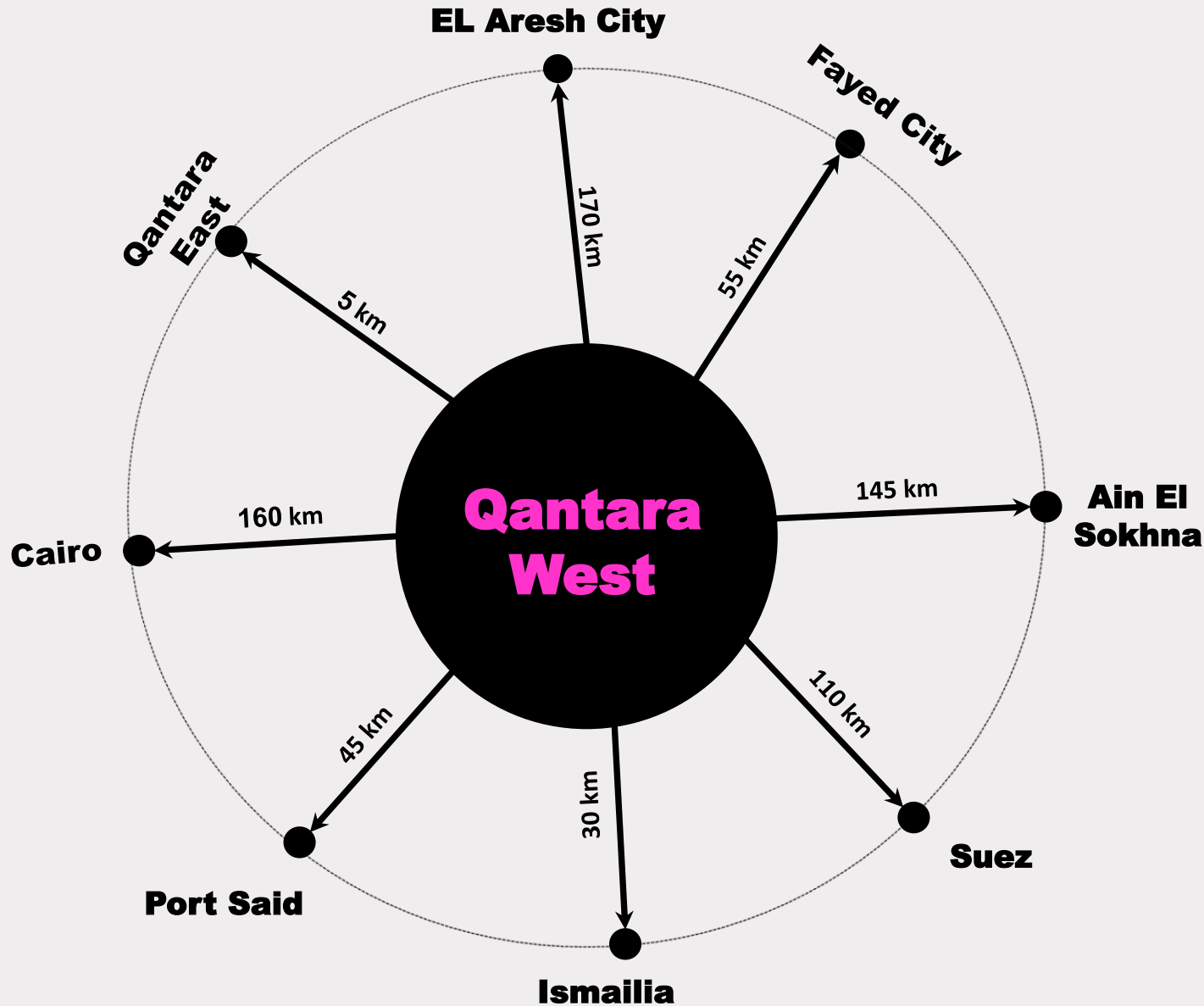
SITE LOCATION



Qantara West is located in Ismailia Governorate, on its northern boundary, and lies on the western bank of the Suez Canal. It is connected to Qantara East in Sinai via the Al-Salam Bridge, which is a suspension bridge with a length of 9.5 km and a height of 70 meters above the canal's water level.



Site Allocation
El Qantara, Ismailia
Governorate



• CAIRO



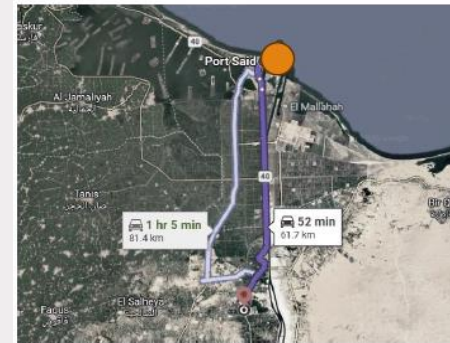
1 hr 47 min
Via Ismailia desert rd

• SUEZ



1 hr 45 min
via Hurgada - Al Ismaileya

• PORT SAID

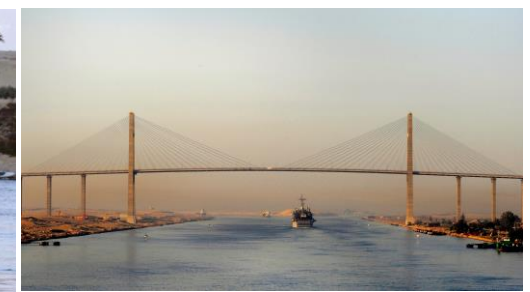


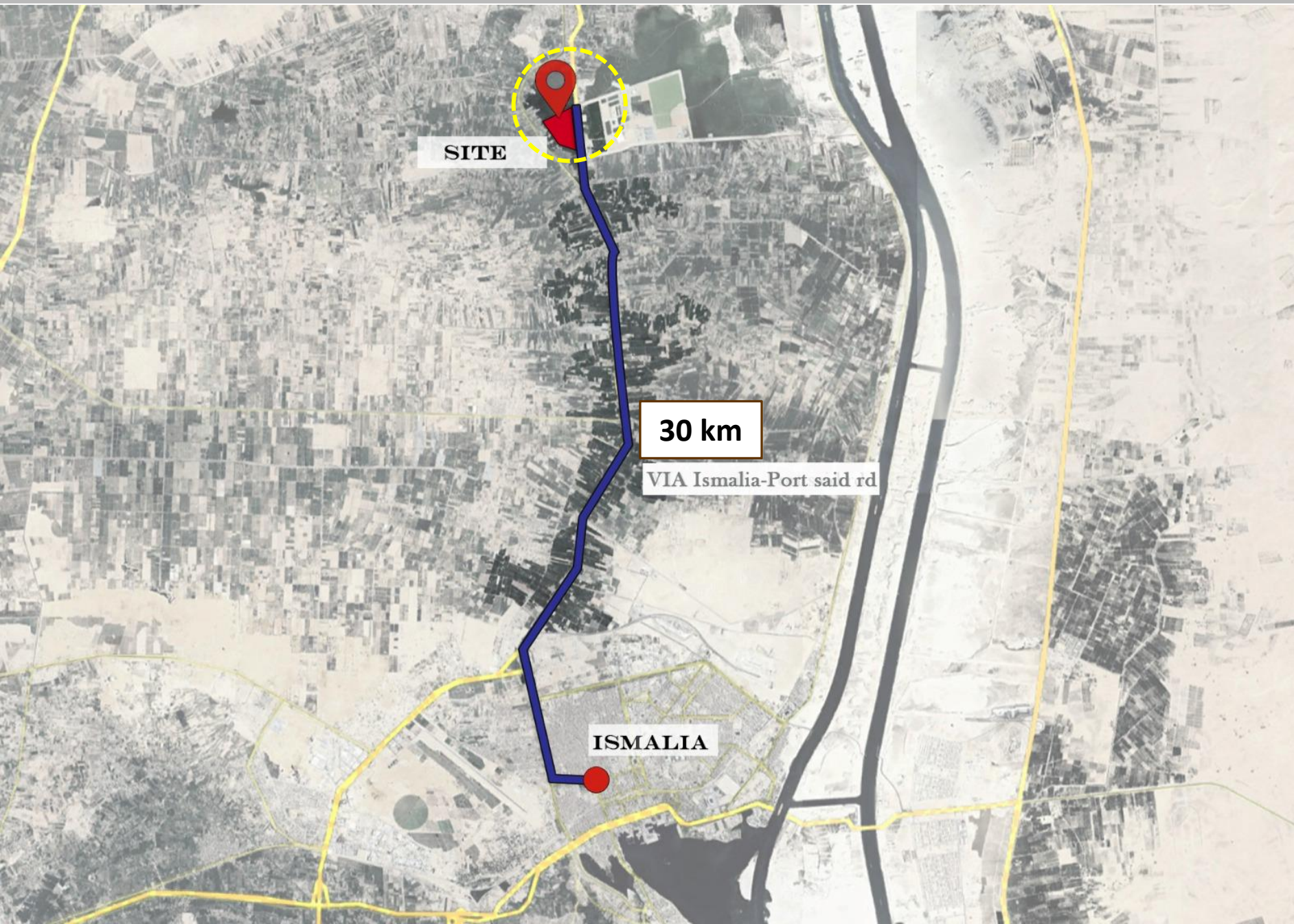
1 hr 5 min
Via Ismaili-Port said rd

• EL AIN EL SOKHNA



1 hr 30 min
Via Ismailia desert rd

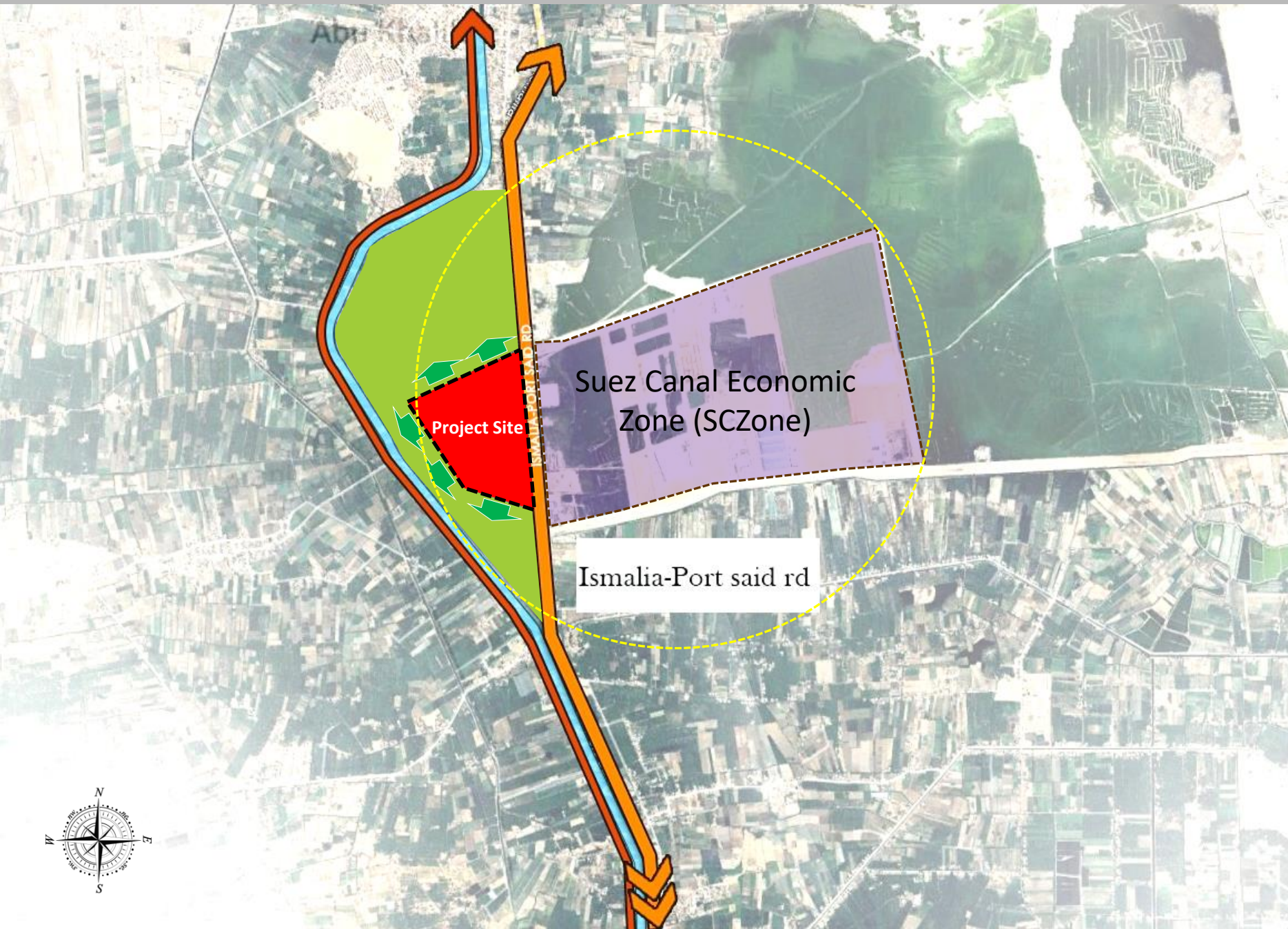







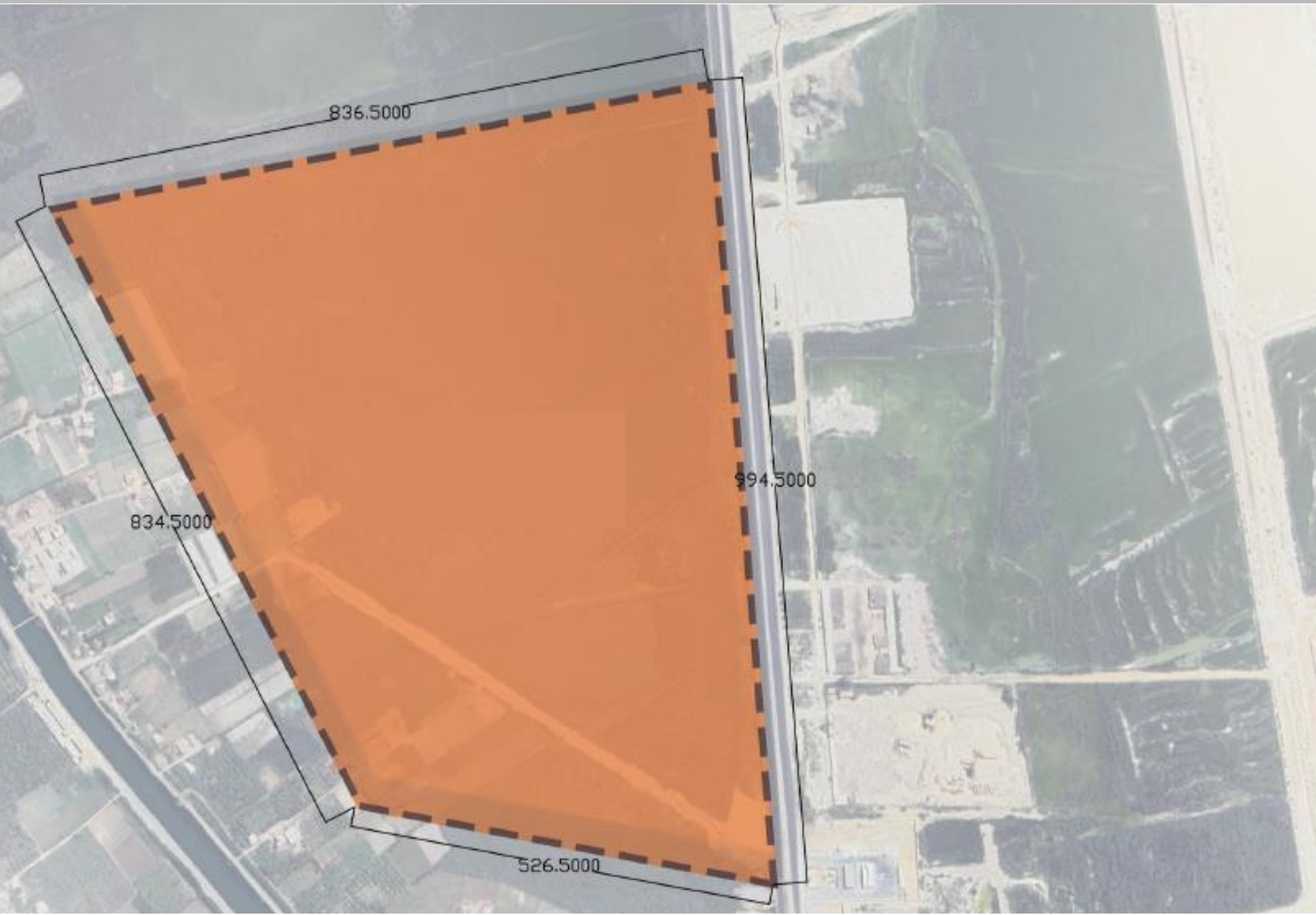
Our site is about
25 min
form Ismailia Center
Accessibility
With direct accessibility
Form the main road
Ismailia port said rd

SITE ANALYSIS





-  Project Site
-  Ismaila port said RD
-  Agricultural lands



Total Area

- 139.77 FED
- 587,033.24 m2



- Land Plot
- Main road
- Project entrances



Plot	Area (m2)
IND-01	31,395.74
IND-02	27,138.48
IND-03	24,185.99
IND-04	21,233.50
IND-05	22,433.80
IND-06	16,382.66
IND-07	20,000.00
IND-08	20,000.00
IND-09	20,000.00
IND-10	19,363.28
IND-11	21,421.28
IND-12	20,000.00
IND-13	20,000.00
IND-14	23,203.46
IND-15	32,074.14
IND-16	27,837.54
IND-17	37,772.95
Total	404,442.81

- Industrial
- Investment
- Green area
- Roads

Landuse	Area (m2)	Area (FED)	%
Industrial 20.000	404,442.81	96.30	68.90
Investment - Services	48,078.22	11.45	8.19
Green area	5,221.07	1.24	0.89
Roads	129,291.14	30.78	22.02
Total	587,033.24	139.77	100.00



QANTARAH WEST



February 2026